



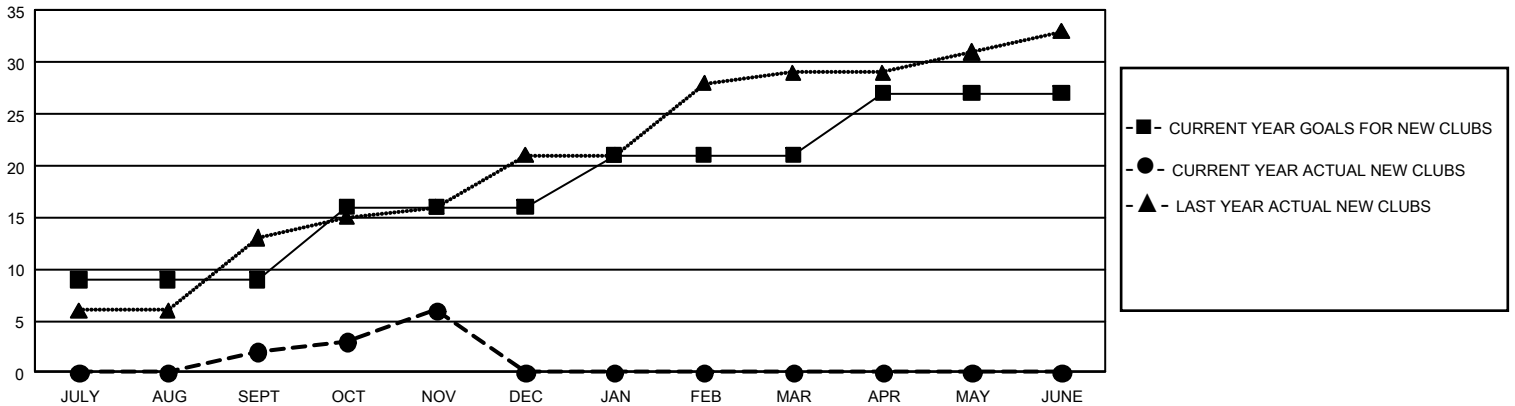
GMT Constitutional Area 6, Group F

GMT: OPEN

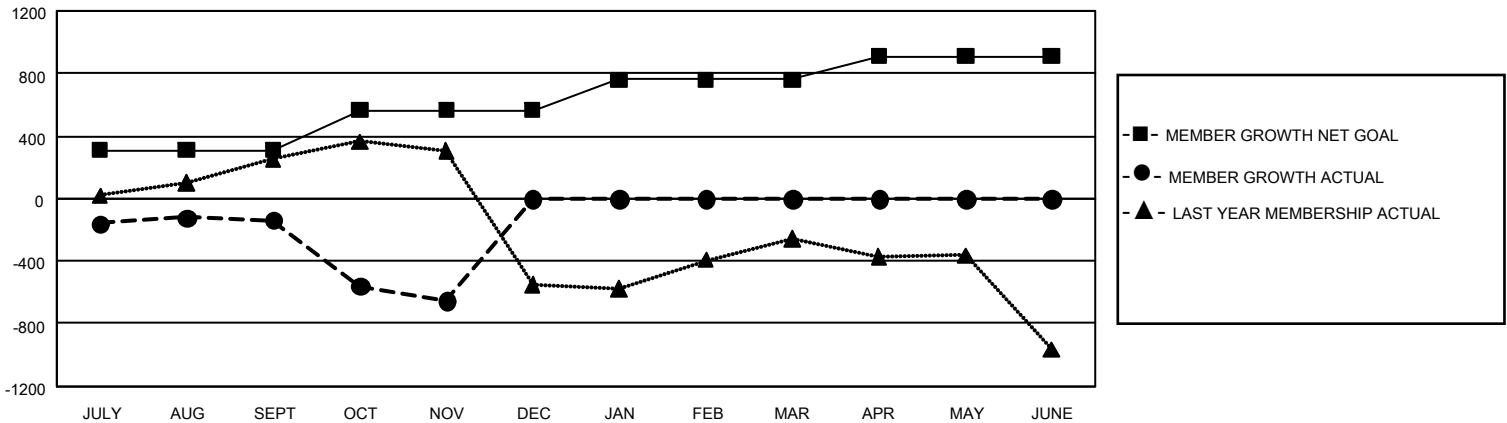
REPORT DOES NOT INCLUDE CLUBS IN UNDISTRICTED AREAS.

Clubs				Members			
RESULTS FOR 2019-2020				RESULTS FOR 2019-2020			
QUARTER	NEW CLUB GOAL	NEW CLUBS	DROPPED CLUBS	QUARTER	MEMBER GROWTH NET GOAL	MEMBER GROWTH ACTUAL	DROPPED MEMBERS ACTUAL (including transfers)
JULY/AUG/SEPT	27	2	5	JULY/AUG/SEPT	930	521	566
OCT/NOV/DEC	21	4	2	OCT/NOV/DEC	765	263	751
JAN/FEB/MAR	15	0	0	JAN/FEB/MAR	585	0	0
APR/MAY/JUNE	18	0	0	APR/MAY/JUNE	450	0	0

GOALS AND ACTUAL NEW CLUBS CUMULATIVE



GOALS AND ACTUAL MEMBERS CUMULATIVE



DROPPED CLUBS: 7	118 CLUBS OF 423 ADDED 1 OR MORE NEW MEMBERS	<u>GENDER DISTRIBUTION</u>	
<u>DROPPED MEMBERS</u>		MALE	11,557 (79.82%)
DECEASED	10	FEMALE	2,922 (20.18%)
CLUB CANCELLED	421	TOTAL FAMILY UNIT MEMBERS 4,072	
OTHER	886	FAMILY MEMBERS PAYING HALF DUES 2,458	
TOTAL	1,317		

[CLICK HERE FOR CUMULATIVE MEMBERSHIP DATA](#)